

TSI Math Boot Camp

Fall 2023 | MATH-0000

Welcome to TSI Math Boot Camp!!

Are you ready to explore and fill in the gaps of arithmetic operations, basic algebraic concepts and notation, geometry, real and complex number systems? As your instructor, I am looking forward to providing you the opportunity to acquire and practice the math skills needed to be successful on your Math TSI.



Email: sharris@southplainscollege.edu

Phone: (806) 716-2665

Office: Mathematics and Engineering 120A (M120A)

Levelland (M120A) Office Hours: TR 11:00 am - noon; TR 1:00 pm - 2:30 pm

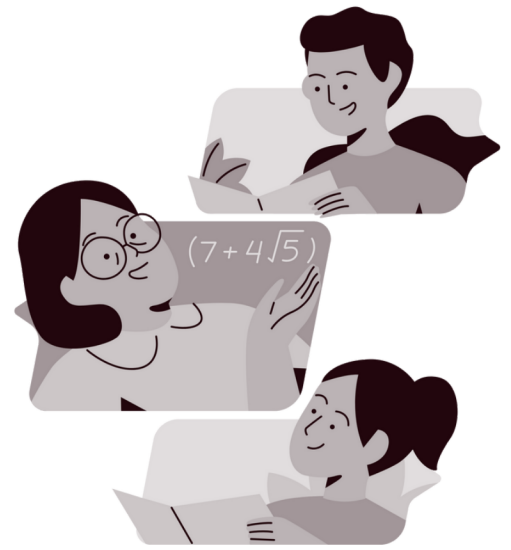
Lubbock Downtown Center (B001) Office Hours: W 4:30 pm - 5:30 pm

Virtual Office Hours: M 6:00 pm - 7:00 pm; T 7:00 pm - 8:00 pm;

R 4:00 pm -5:00 pm; F 10:00 am - 11:00 am

What will you learn this semester?

1. Use appropriate symbolic notation and vocabulary to communicate, interpret, and explain mathematical concepts
2. Define, represent, and perform operations on real numbers, applying numeric reasoning to investigate and describe quantitative relationships and solve real world problems in a variety of contexts
3. Use algebraic reasoning to solve problems that require ratios, rates, percentages, and proportions in a variety of contexts using multiple representations
4. Apply algebraic reasoning to manipulate expressions and equations to solve real world problems
5. Use graphs, tables, and technology to analyze, interpret, and compare data sets
6. Construct and use mathematical models in verbal, algebraic, graphical, and tabular form to solve problems from a variety of contexts and to make predictions and decisions
7. Use algebra skills to solve equations involving factoring and inequalities



 *Work on the material in ALEKS*

All course material will be taught and assessed by ALEKS. You are expected to work on the class materials for 3 hours per week.

Meet the Weekly Pie Progress Goal

You are expected to meet the pie progression each week. Since the class is self-paced, everyone may learn different topics.



 *Schedule Meetings and Ask questions*

The instructor is a resource to help you learn. If you get stuck ask for help after you have attempted the topic.



Schedule to take the math portion of the TSI

Schedule to take the math portion of the TSI by Wednesday, 13 December 2023, at 3:30 pm. Scheduling the TSI is 32.5% of the course grade. Everything done in the class is to prepare you for this assessment.

What am I required to do for this class?

What supplies or resources are needed for this class?

Writing Utensil



8.5 inch x 11 inch paper



Working Laptop



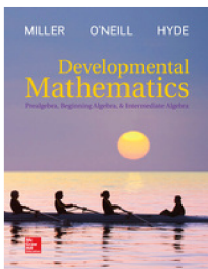
Good Internet Connection



No Calculator

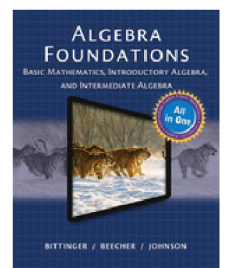


What books could help but are not required?



Developmental Mathematics, 1st ed.
Julie Miller, Molly O'Neill, and Nancy Hyde
ISBN 9781260189629

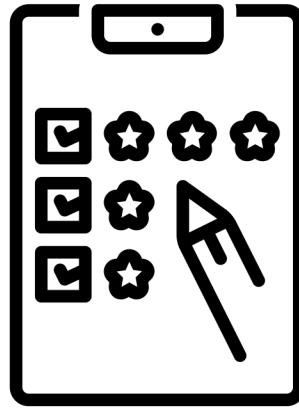
Algebra Foundations, 1st ed.
Marvin Bittinger, Judith Beecher, and Barbara Johnson
ISBN 9780321974099



Assignments & Grading

1 Weekly Pie Progress Goal

(15 assignments, 2.50 points each)
Weekly the amount of the pie chart will be evaluated. The assignment will be graded by completion.



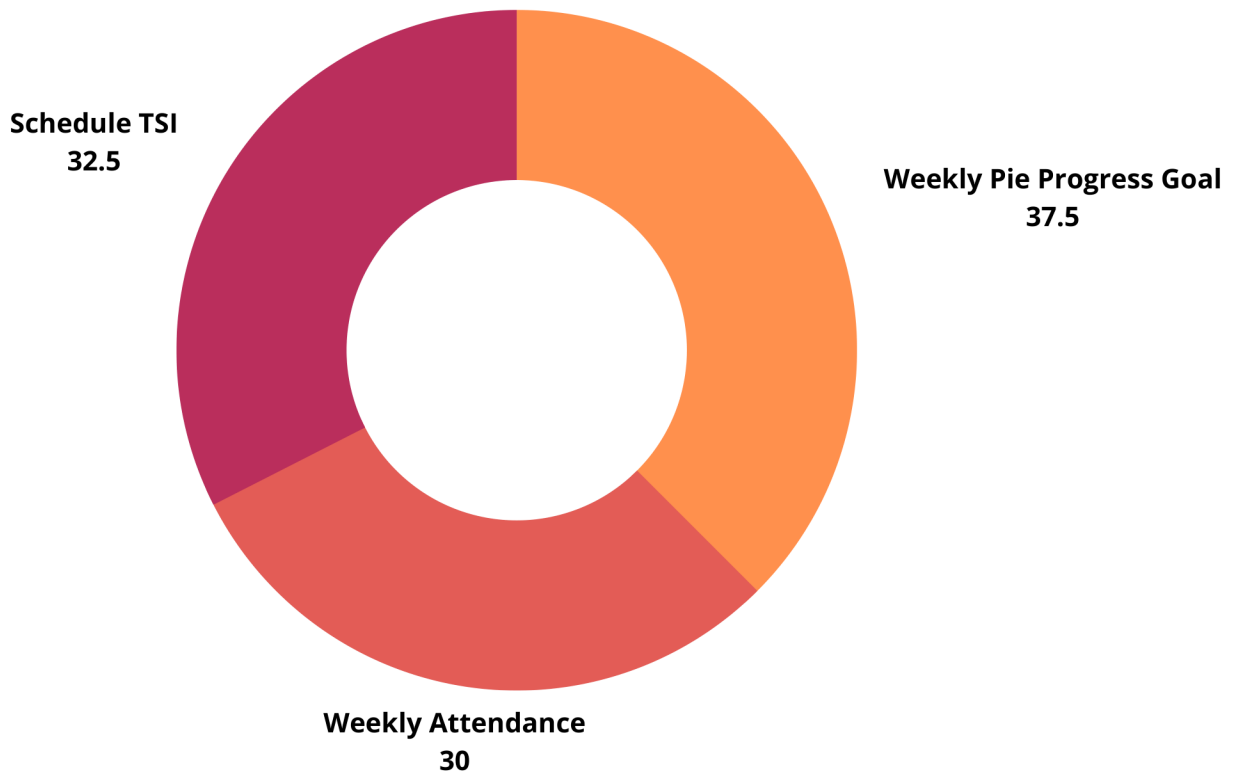
2 Weekly Meetings

(15 assignments, 2 points each)
Schedule and attend weekly meetings with the instructor to ask any questions and discuss the topic you have been learning. The grade is an all or nothing grade.

3 Schedule the math portion of the TSI

(1 assignment, 32.5 points)
Schedule to take the math portion of the TSI by Wednesday, 10 May 2023, at 3:30 pm.

Your final grade will be based on the total points accumulated out of 100 points. It will be reported South Plains College as either Pass (80 points or higher) or Fail.



Participation



You Are Responsible

If you miss class or fall behind for any reason, you are responsible to obtain the notes and catch up. I cannot repeat material or change the schedule for the entire class.



Communication is Key

If you have an emergency, you need to let me know by email or phone **immediately**. Letting me know the following day or later makes it difficult for me to discern and assess your situation. Therefore, making it harder to help and work with you.



Emergencies Happen

While emergencies happen, they need to be serious enough to merit a late submission and they need to be verifiable to be excused. If you cannot show documentation of your emergency and/or if deemed not serious enough, your late submission will not be accepted.



There is (Some) Flexibility

All students can earn the extra credit points. If you should miss an assignment deadline those extra credit points can "replace" the missed points.

Integrity

It is the aim of the faculty of South Plains College to foster a spirit of complete honesty and a high standard of integrity. The attempt of any student to present as his or her own any work which he or she has not honestly performed is regarded by the faculty and administration as a most serious offense and renders the offender liable to serious consequences, possibly suspension. (SPC General Catalog)



Academic Integrity (Plagiarism and Cheating Policy)

"Complete honesty is required of the student in the presentation of any and all phases of course work. This idea applies to quizzes of whatever length as well to final examinations, to daily reports, and to term papers."
(SPC General Catalog)



Consequences for Cheating

Plagiarism and cheating are not tolerated in this course. Under the policies of South Plains College, punishment for cheating may include no credit (failing) on the assignment, quiz, exam, or the course.

Cheating violations include, but are not limited to, the following:

1. Obtaining an examination by stealing or collusion
2. Discovering the content of an examination before it is given
3. Using an unauthorized source of information (notes, textbook, text messaging, internet, apps) during an examination, quiz, or homework assignment
4. Entering an office or building to obtain an unfair advantage
5. Taking an examination for another
6. Altering grade records
7. Copying another's work during an examination or on a homework assignment
8. Rewriting another student's work in Peer Editing so that the writing is no longer the original student's
9. Taking pictures of a test, test answers, or someone else's paper.

What is considered cheating?

Web & Email



I regularly update Blackboard with announcements, assignments, and resources related to class. It is your responsibility to check Blackboard everyday. Any last minute changes will be posted on Blackboard as an announcement.

Emails Should Include



Your first and last name



Your class name and section



Your questions and/or comments in the body of the email (not subject line)

I Will



Check my email regularly during weekdays before 7:00



pm
Do my best to respond within 24 hours

I Will Not



Always respond immediately on weekends or holidays



I am always **happy** to meet with you for **academic advising**, **help** on assignments, or just to **chat**. My office hours are listed on the first page of this syllabus, or you can schedule an appointment for **undivided attention**.



SCAN ME

But...please ALWAYS keep your appointments



This is a classroom built on respect and a safe learning environment. Failure to be respectful may cause one of three penalties, depending on the seriousness of the offense: asked to leave the class for the day; an appointment with the Dean of Students; or expulsion from the course.



- Be Engaged
- Be Polite
- Be on Time
- Be Prepared
- Be Ready to Learn



- Name call, Marginalize, or Stereotype
- Participate Drunk or Under the Influence
- Be Distracted
- Use Inappropriate Language

How to be Successful in this Class

- Turn off devices not needed for learning
- Use your resources
- Help each other
- Communicate with me
- Complete the assigned work
- Read your feedback and learn from your mistakes
- Save your notes and files

While unforeseen events do happen that can make college life and achievement difficult, generally speaking success is a **choice**. In order to help yourself succeed:

- Avoid distractions (cell phone, social media, games, television, or open tabs and windows on your device) when watching and working through lecture videos
- Use the resources (notes, extra videos on Blackboard, free tutoring through the college, each other, and myself) available to you
- Don't hesitate to ask for help and always communicate
- Be sure to complete the assigned work
- Read the feedback given to you on graded work to improve your skills
- Save all of your notes and work

Resources



FREE TUTORING

Tutors are available to SPC students for FREE!
We can help you on any campus in person or online

Call 806-716-2538 or email tutoring@southplainscollege.edu for more info.

WALK IN OR MAKE AN APPOINTMENT!



Library

Textbooks on Reserve

Technology Checkout

- Chromebooks/Laptops
- Hot Spots

Study Areas

Health & Wellness Center

Counseling

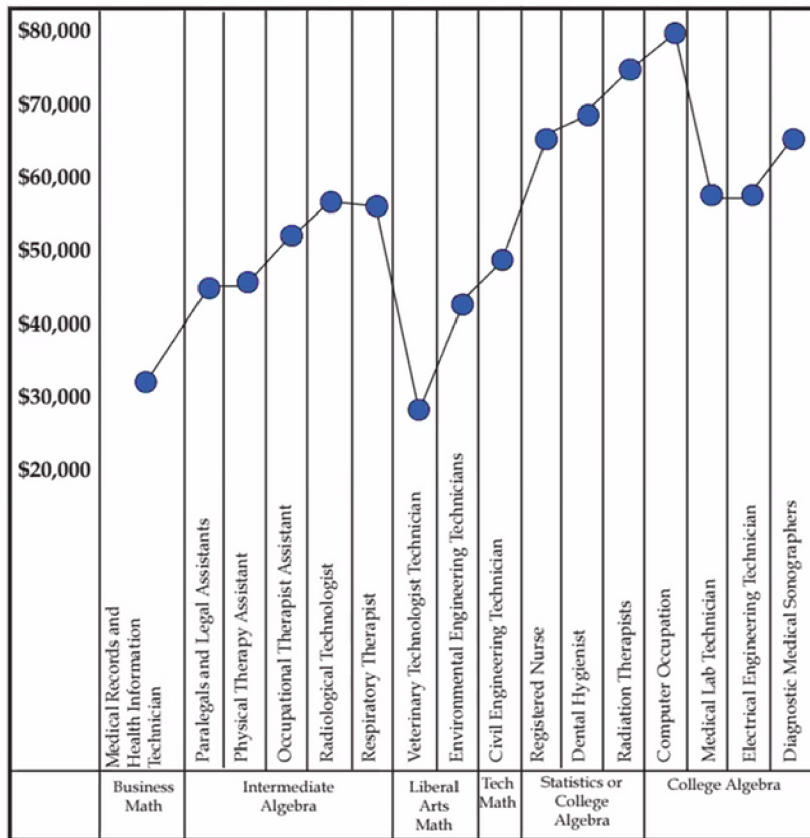
Health Clinic

Disability Services

Question: How much math do I have to take?

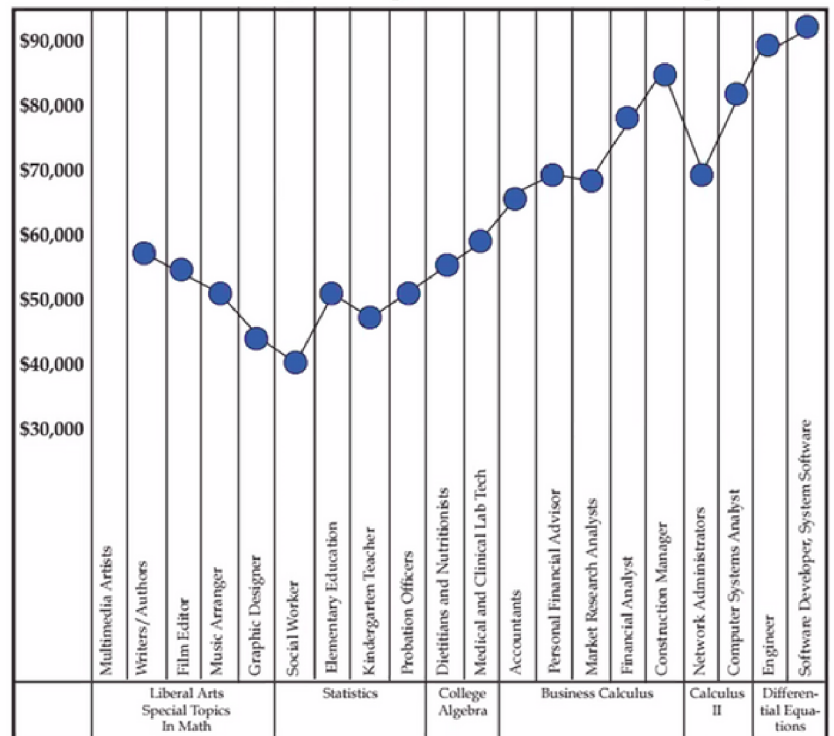
Answer: How much money do you want to make?

Best Jobs Requiring an Associate's Degree



Source: *Best Jobs for the 21st Century*, Sixth Edition © JIST Works 2012
 Graph: © Academic Success Press Inc. 2013

Best Jobs Requiring a Bachelor's Degree



Source: *Best Jobs for the 21st Century*, Sixth Edition © JIST Works 2012
 Graph: © Academic Success Press Inc. 2013